

Marine Property Presentation

Board and Teaching Team Workshop: February 15, 2019

Presentation Overview

Learning Program

Community Support

Marine Property Assets

Marine Property Lease, Details, Financials

Marine Property Safety Considerations, Needs

Learning Program

MN State Charter School Statute

124E.01 PURPOSE AND APPLICABILITY.

Subdivision 1. Purposes.

The **primary purpose of charter schools is to improve all pupil learning and all student achievement.**

Additional purposes include to:

- (1) increase learning opportunities for all pupils;
- (2) encourage the use of different and innovative teaching methods;
- (3) measure learning outcomes and create different and innovative forms of measuring outcomes;
- (4) establish new forms of accountability for schools; or
- (5) create new professional opportunities for teachers, including the opportunity to be responsible for the learning program at the school site.

Marine Area Community School declared a Charter School by the State of Minnesota on September 27, 2016 and assigned Identification Number 4254.

Learning Program

Mission: Marine Area Community School will utilize the natural resources, history, arts, and civic stewardship of the community as a premise for the study of language arts, mathematics, science, social studies, physical education, and the arts. This place-based learning environment will be student-centered, teacher-powered, and supported by the local community.

Vision: At Marine Area Community School, our community is our curriculum. Surrounded by William O'Brien State Park and the St. Croix National Scenic Riverway, supported by a civically active, multi-generational community, and inspired by local artists, craftsmen, ecologists, historians, and community members, the School will provide its students with a strong foundation for civic engagement, responsible leadership, and lifelong learning.

Letter of Intent to Start a Charter School

December 2, 2015

The Minnesota Guild
Attn: Brad Blue
67 8th Avenue NE
Minneapolis, MN 55413-1845

RE: Notice of Intent to form a Charter School in Marine on St. Croix

...

The community desires to keep an elementary school within the town of Marine on St. Croix, and the existing school facility is expected to be available to lease.

Community Support - Donations

Summer 2016 Appeal

Number of responses: 89

Percent of support with connection to Marine: 100%

Summer 2017 Appeal, original list plus all enrolled families

Number of responses: 143

Percent of support with connection to Marine: 91%

2017-2018 PTO Donations

\$42,269

2018-2019 PTO Donations YTD

\$17,723

Marine Property Learning Program Delivery

Place-based, Project-based

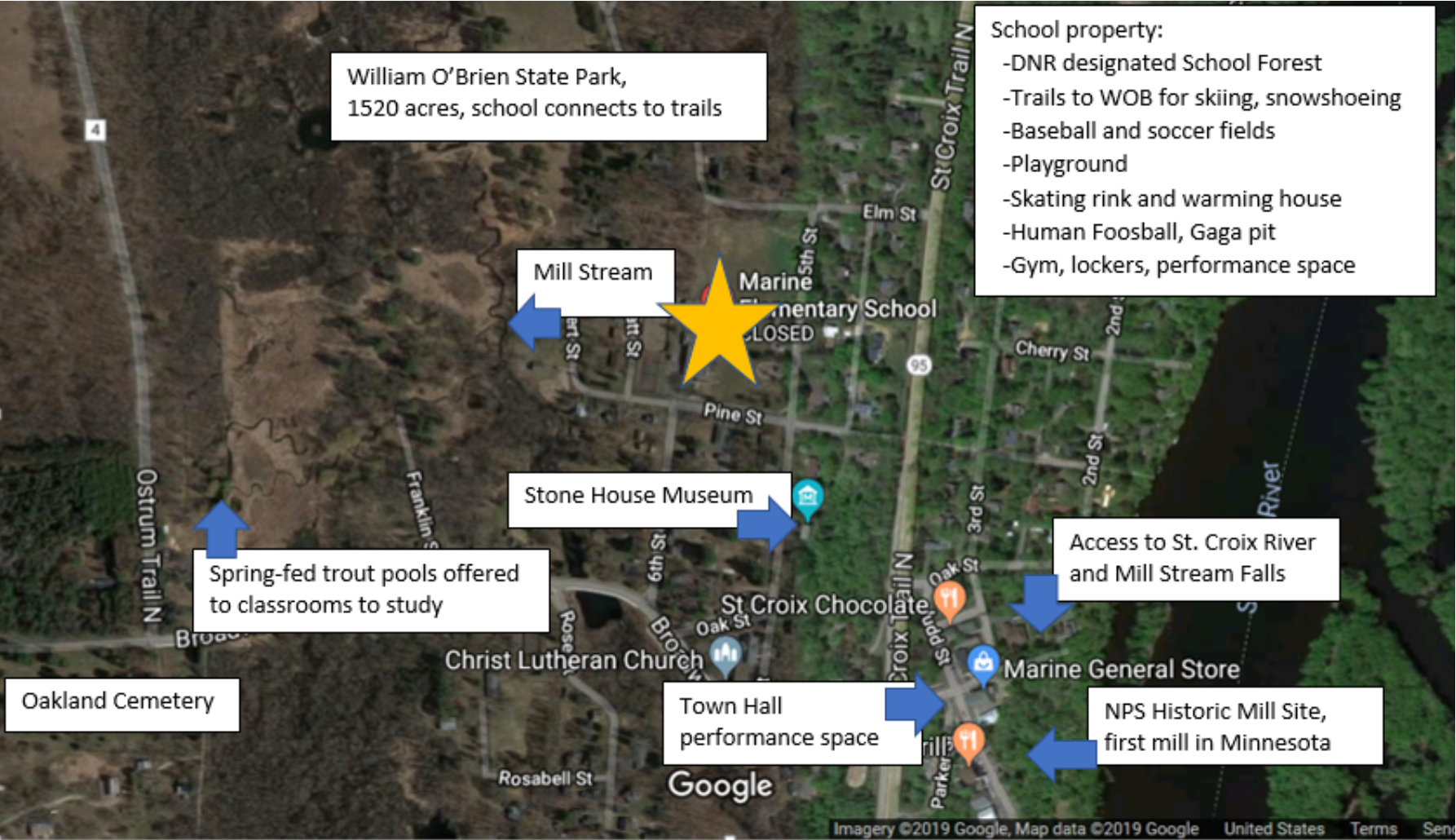
Environment

Arts

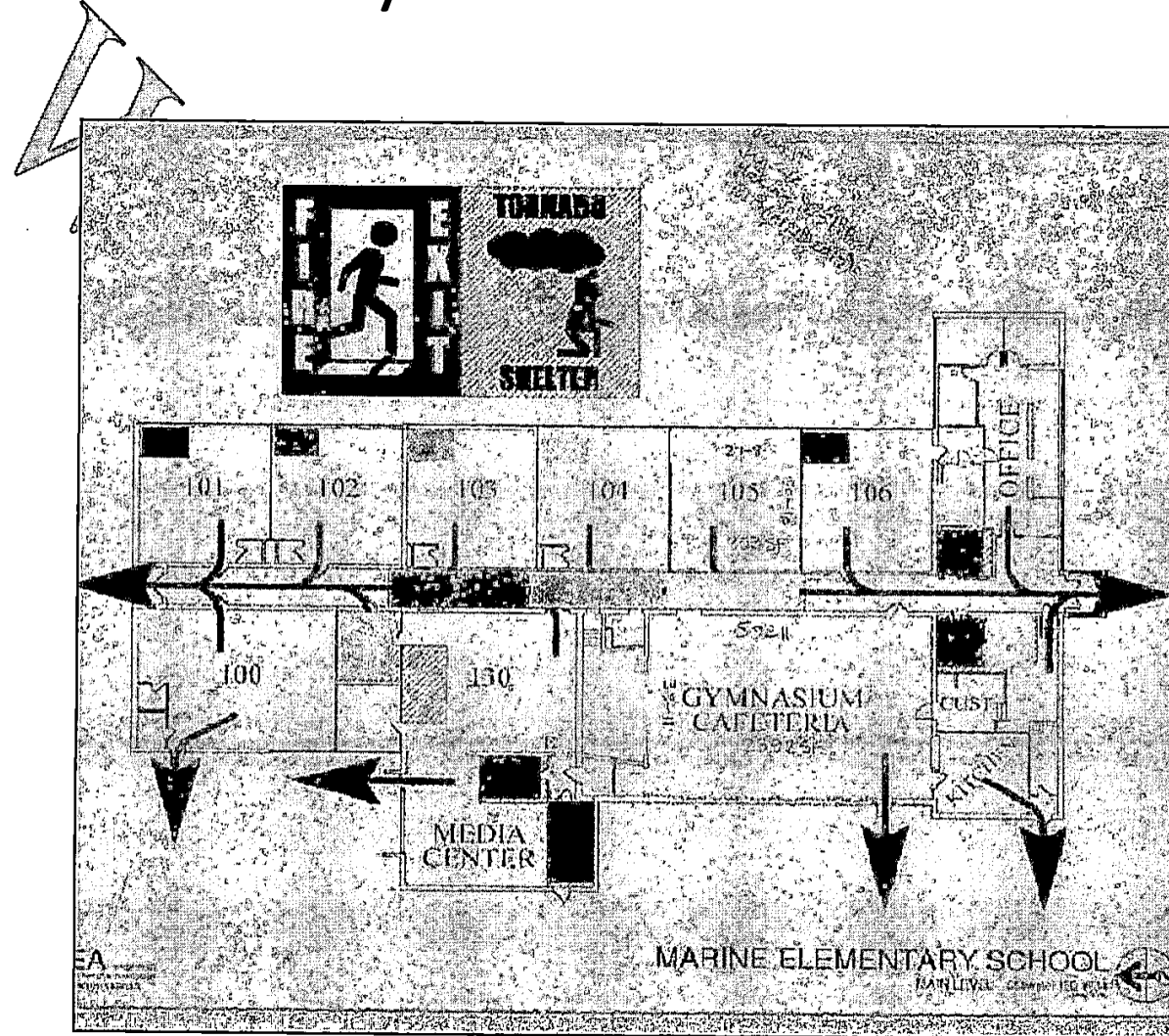
History

Civic Engagement

Marine Property Assets



Marine School Layout



Marine Property – Lease

Ownership:	Town of Marine on St. Croix
Lease terms:	25 years
Intent to sell:	No
Capital Improvements:	Town responsibility
Maintenance:	Town responsibility
Utilities:	School responsibility
Sewer, Wells:	Town responsibility
Expansion option:	Yes, Town will pay for costs
Zoning:	Allowed

Marine Property - Details

Building	Year built	Square feet	Roof age	HVAC system age	Windows Original (Y/N)	2016-17 Utility costs	2016-17 Maintenance costs
Marine Elementary	1955 additions 1965, 1974 & 2005	17,429 plus 960sf portable classroom	16 years (2003)	14 years (2005)	Windows replaced 2005 w/Anderson 20yr glass warranty	Gas & Electric \$34,979.47 Sewer & Garbage \$6807.00 Actual	*\$34,860.00 Budget

Sewer capacity, or any constraints: No constraints

Who is responsible for sewer maintenance (school, town): MOSC

Well limitations? No limitations

Who is responsible for well maintenance (school, town): MOSC

Please share expansion potential if additional classroom space is needed: MOSC will work with RG to ensure enough classroom space for enrolled students.

*Figure is from Building Owners and Managers Association (BOMA) repair and maintenance budget of \$2.00 per SF. MOSC will budget this for future repair and replacement of equipment, roof etc...

River Grove will be responsible for items within school

Marine Property - Financials

Site Maintenance:	Town
Building Maintenance:	Town
Gas and Electric:	\$ 34,979 (2016-17 costs)
Sewer and Garbage:	\$ 6,807 (2016-17 costs)
Snow Removal:	Town
Property Insurance:	Town
Permits:	Town
Total Annual Costs to School:	\$ 41,786 (based on 2016-17)

Marine Property Safety

Washington County Sheriff assessment to be received week of Feb 18th.

No recommendations from Stillwater School District on safety improvements.